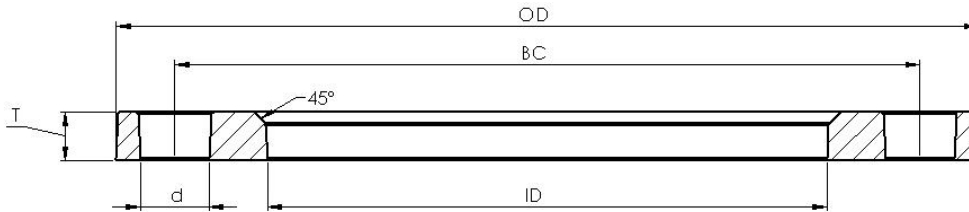




Casting Solutions Since 1951



Ductile Iron Back-Up Flange for Stub Ends

- Manufactured in Quarryville, PA USA
- Ductile Iron ASTM A-536 (65-45-12)
- ANSI B16.5 Class 150 Lb. Bolt Circle

Pipe Size	Min. Dia. Of Bore (ID)	Outside Diameter (OD)	Minimum Thickness (T)	Number of Bolt Holes	Diameter of Bolt Holes (d)	Diameter of Bolt Circle (BC)
½"	0.90	3.5	0.44	4	0.63	2.38
¾"	1.11	3.9	0.50	4	0.63	2.75
1"	1.38	4.3	0.50	4	0.63	3.13
1 ½"	1.97	5.0	0.50	4	0.63	3.88
2"	2.44	6.0	0.50	4	0.75	4.75
2 ½"	2.94	7.0	0.50	4	0.75	5.50
3"	3.56	7.5	0.50	4	0.75	6.00
4"	4.56	9.0	0.56	8	0.75	7.50
6"	6.75	11.0	0.63	8	0.88	9.50
8"	8.75	13.5	0.63	8	0.88	11.75
10"	10.88	16.0	0.63	12	1.00	14.25
12"	12.88	19.0	0.75	12	1.00	17.00
14"	14.19	21.0	0.75	12	1.13	18.75
16"	16.19	23.5	0.75	16	1.13	21.25
18"	18.19	25.0	0.88	16	1.25	22.75
20"	20.25	27.5	0.88	20	1.25	25.00

BUCK COMPANY, LLC
 897 Lancaster Pike
 Quarryville, PA 17566
 Plant: **717.284.4114**
 Fax: **717.284.3737**

www.buckcompany.com